



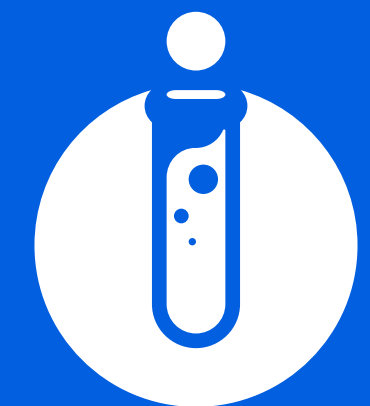
OpenInfra
Labs



OpenInfra **Labs**



OpenInfra **Labs**



OpenInfra
Labs

Blue

#025fdf

PMS 2935 C

C=84 M=65 Y=0 K=0

Light Blue

#00ccff

PMS 305 C

C=63 M=0 Y=0 K=0

Dark Gray

#333333

PMS Neutral Black C

C=65 M=66 Y=68 K=82

Light Gray

#f2f2f2

C=4 M=2 Y=2 K=0

White

#ffffff

C=0 M=0 Y=0 K=0

HORIZONTAL LOGO



STACKED LOGO

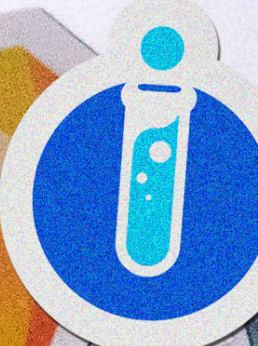


TYPOGRAPHY: HELVETICA BOLD / REGULAR

Headline

Lorem ipsum dolor sit amet, consectetur adipiscing elit, sed diam nonummy nibh euismod tincidunt ut laoreet dolore magna aliquam erat volutpat. Ut wisi enim ad minim veniam, quis nostrud exerci tation ullamcorper suscipit lobortis nisl.

CALL TO ACTION



OpenInfra Labs



SEAL OF APPROVAL

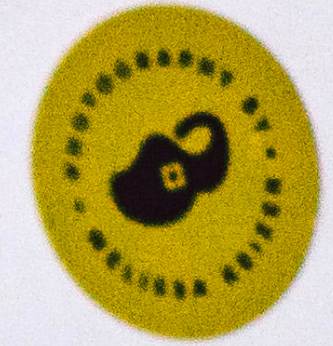
nice



I ❤️ OPEN SOURCE



PIXEL PIONEERS



THE NEW BLACK 0617 C

MAKE YOUR MARK





OpenInfra Labs

An OSF Project

Connecting open source projects to production

OpenInfra Labs is a community, created by and for operators, testing open source code in production, publishing complete, reproducible stacks for existing & emerging workloads, to advance open source infrastructure.

Delivering open source tools to run cloud, container, AI, machine learning and edge workloads repeatedly and predictably



Integrated testing of all the necessary to provide a complete use case



Documentation of operational and functional gaps required to run upstream projects in a production environment



Shared code repositories for operational tooling and the "glue" code that is often written independently by users



OpenInfra
Labs